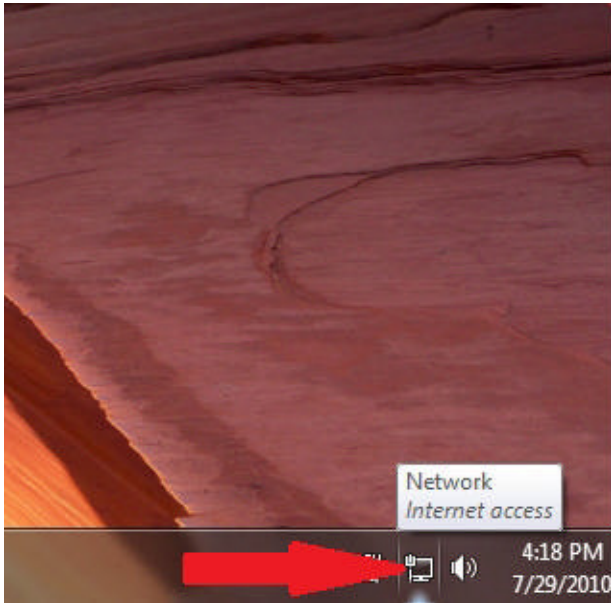
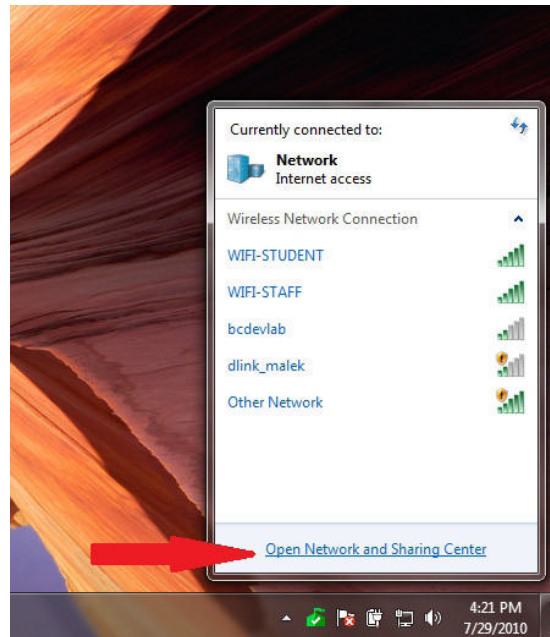


How to connect to **WIFI-STUDENT** For **Windows 7**

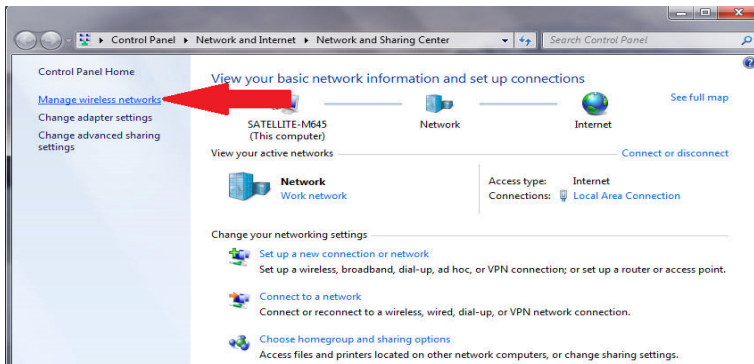
1. Click the network icon on the bottom right of your computer



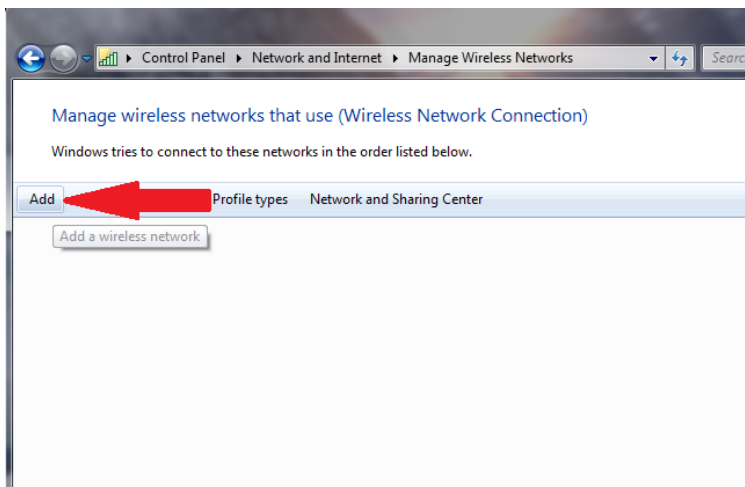
2. Click Open Network and Sharing Center



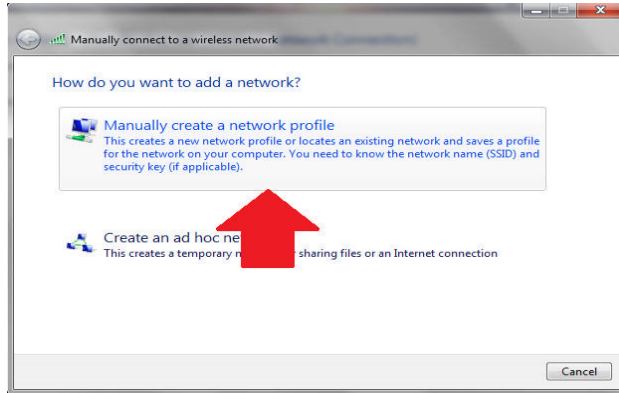
3. Click Manage wireless networks



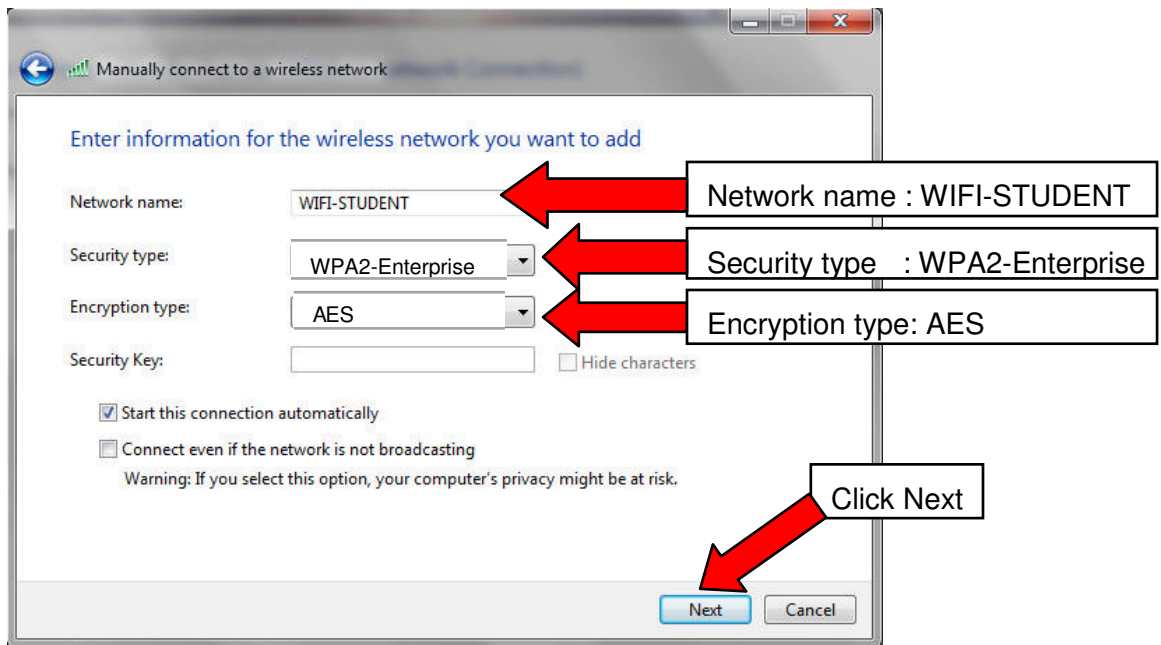
4. Click Add



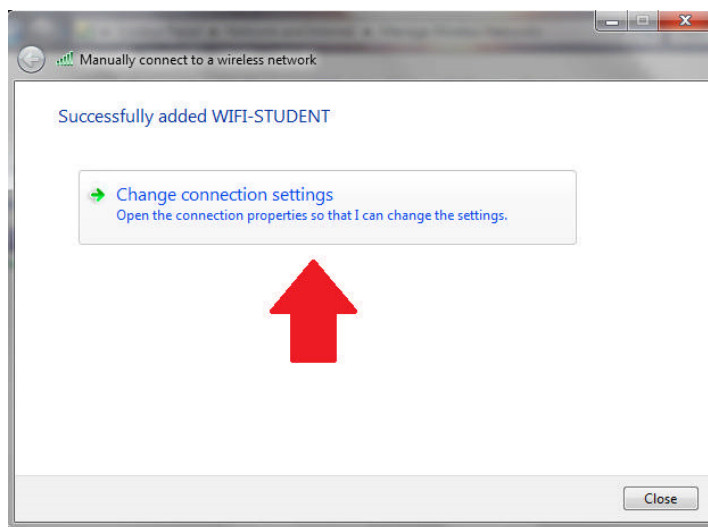
5. Click Manually create a network profile



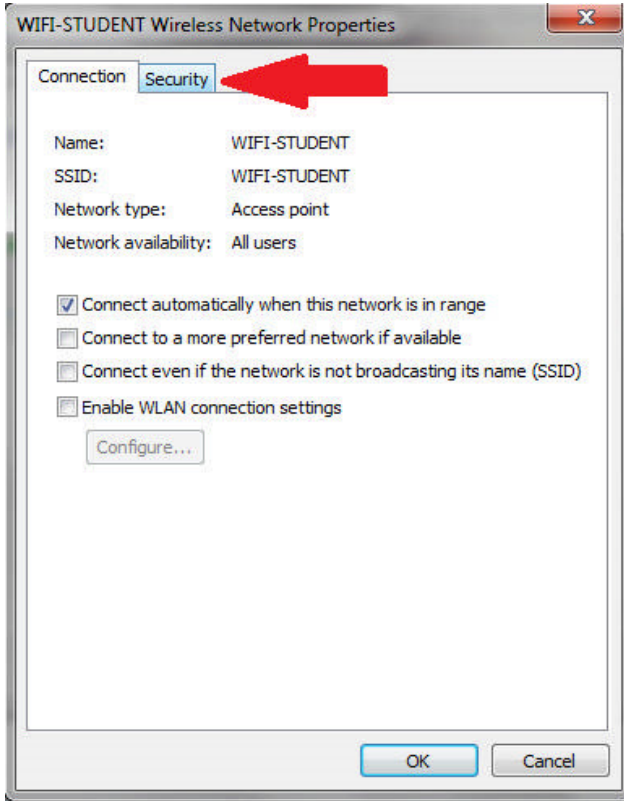
6. Enter information for the wireless network you want to add



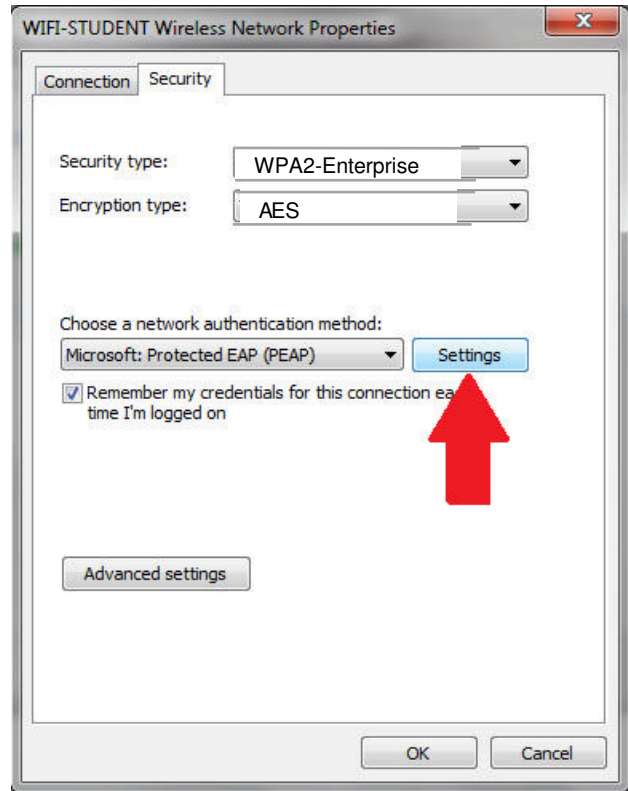
7. Click Change connection settings



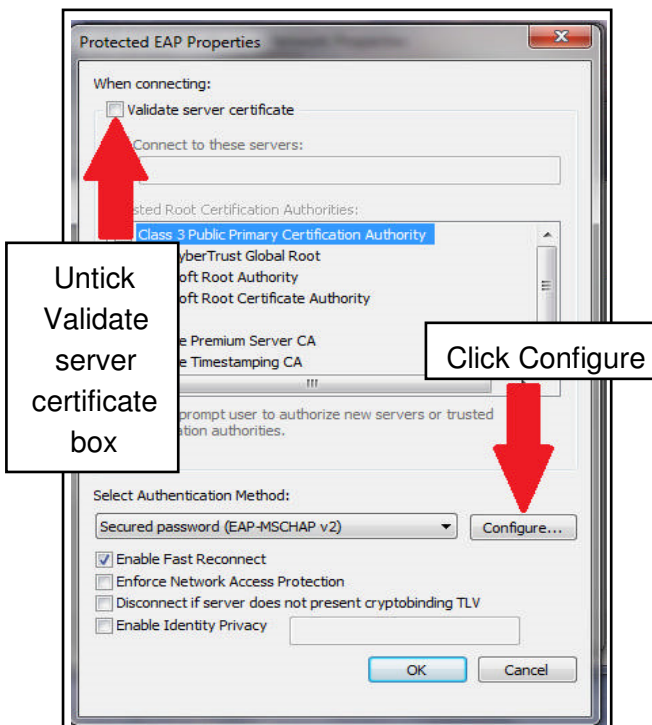
8. Click Security tab



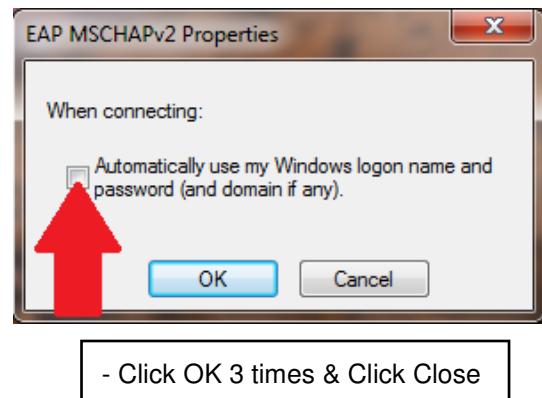
9. Click Settings



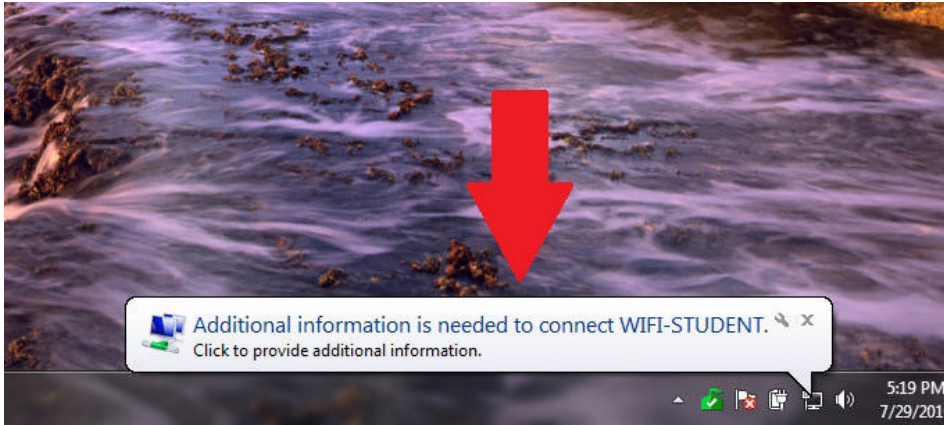
10. Protected EAP Properties



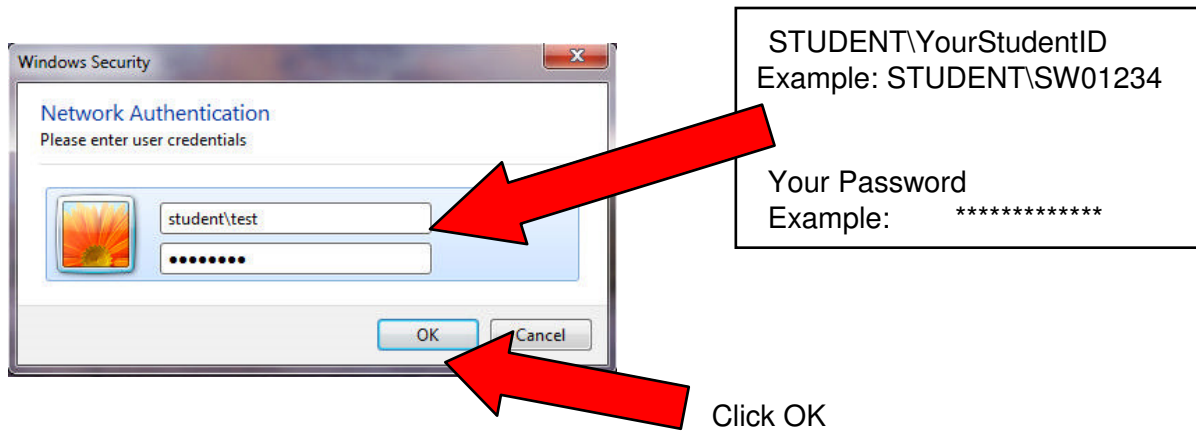
11. Untick Automatically use my Windows logon name and password (domain if any) box



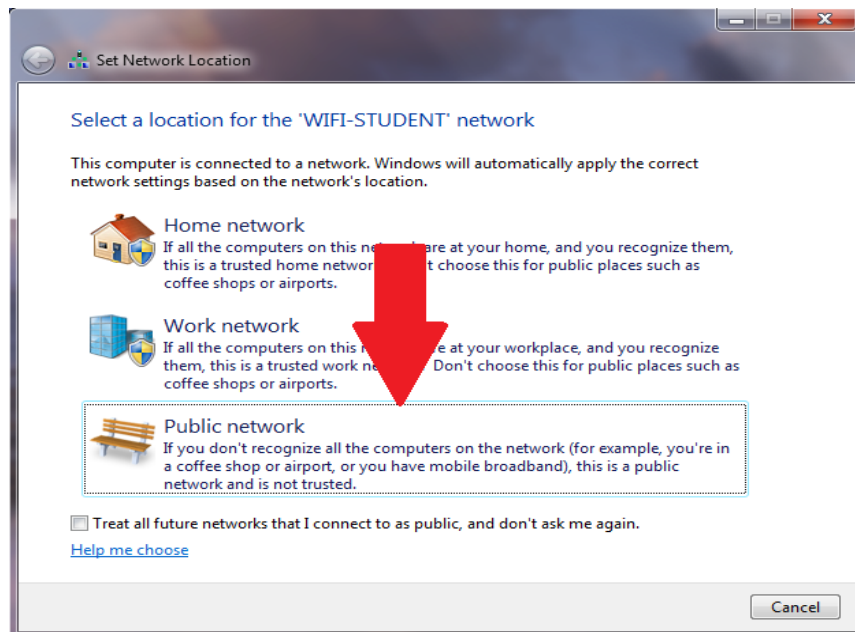
12. Click Additional information is needed to connect WIFI-STUDENT balloon



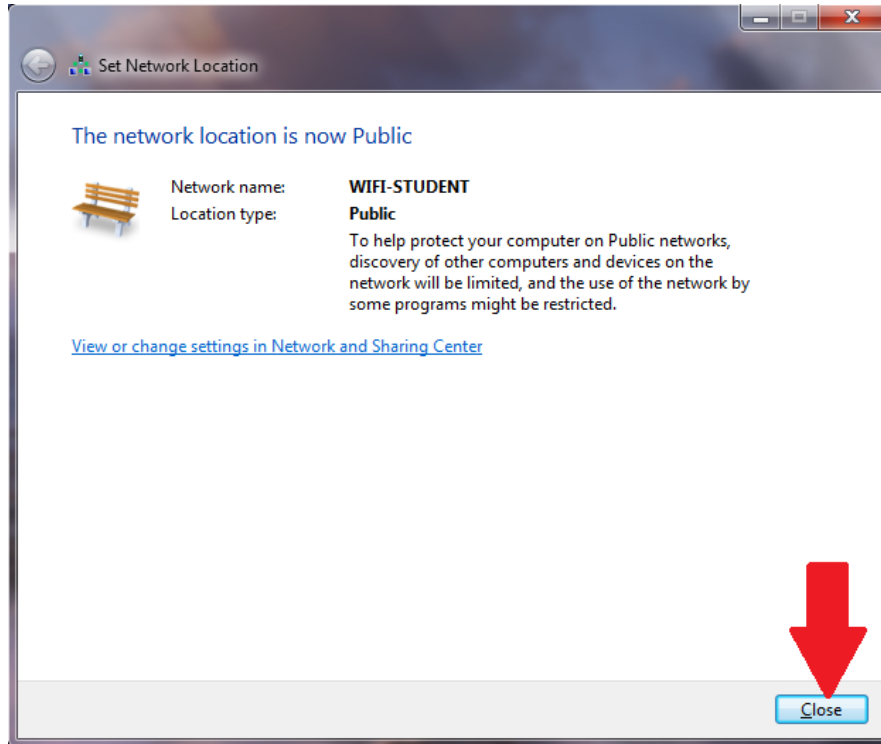
13. Please enter user credentials



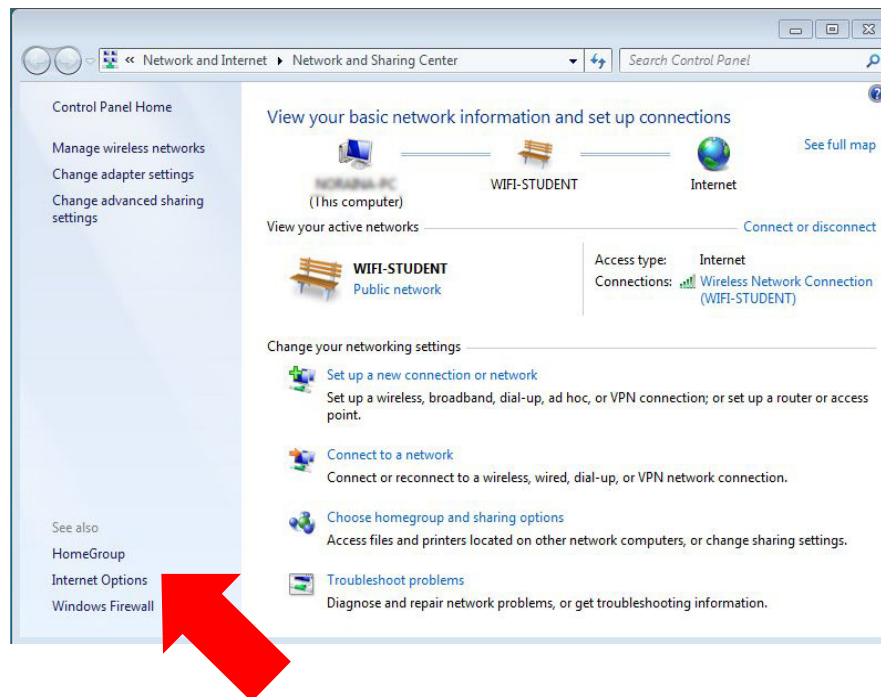
14. Click Public network



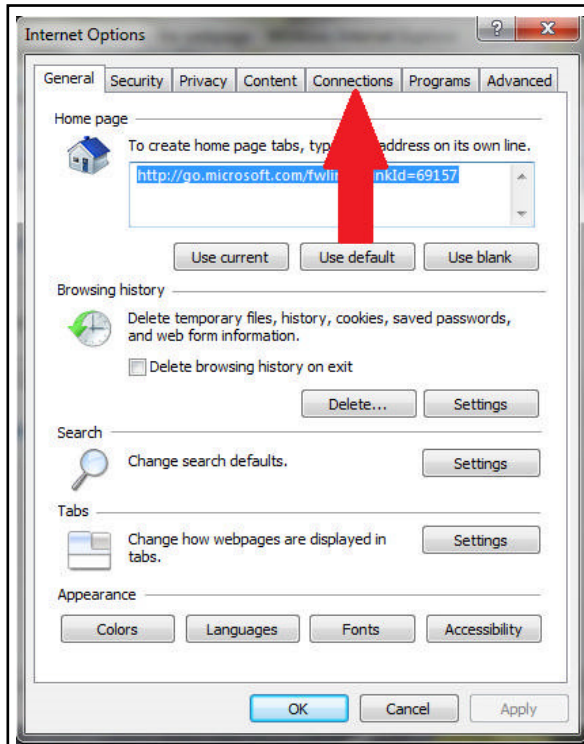
15. Click Close



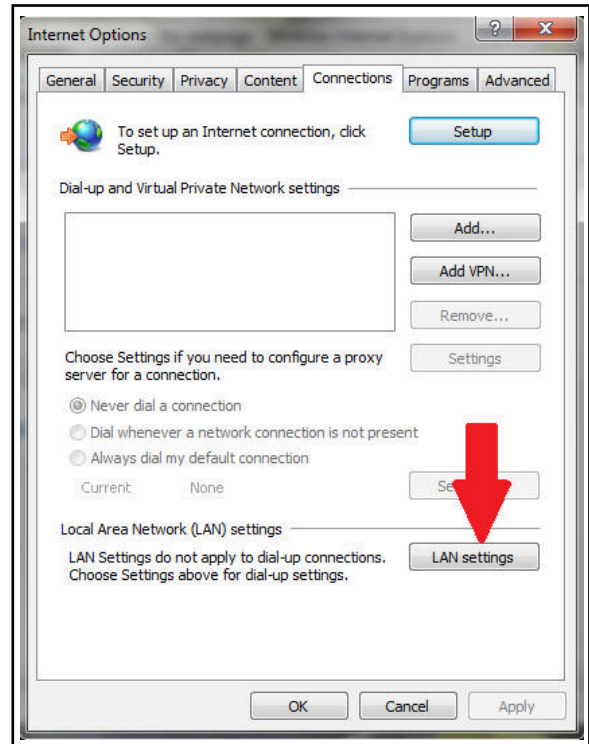
16. Click Internet Option



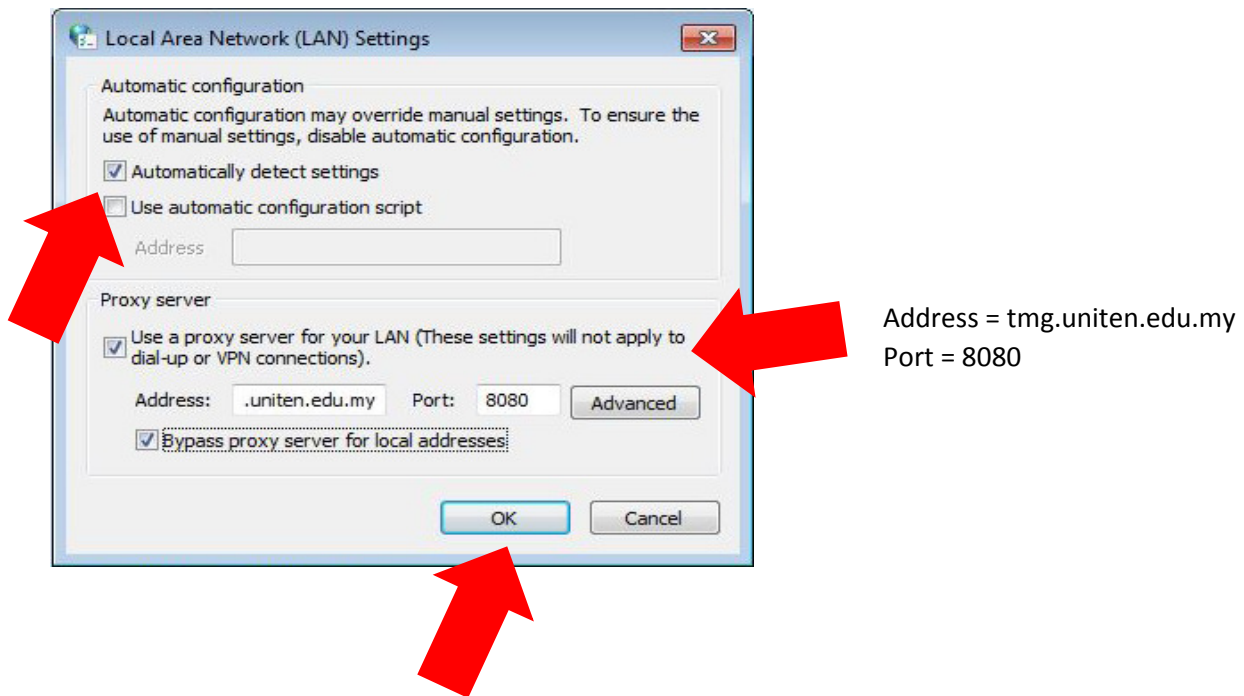
17. Click Connections tab



18. Click LAN Settings

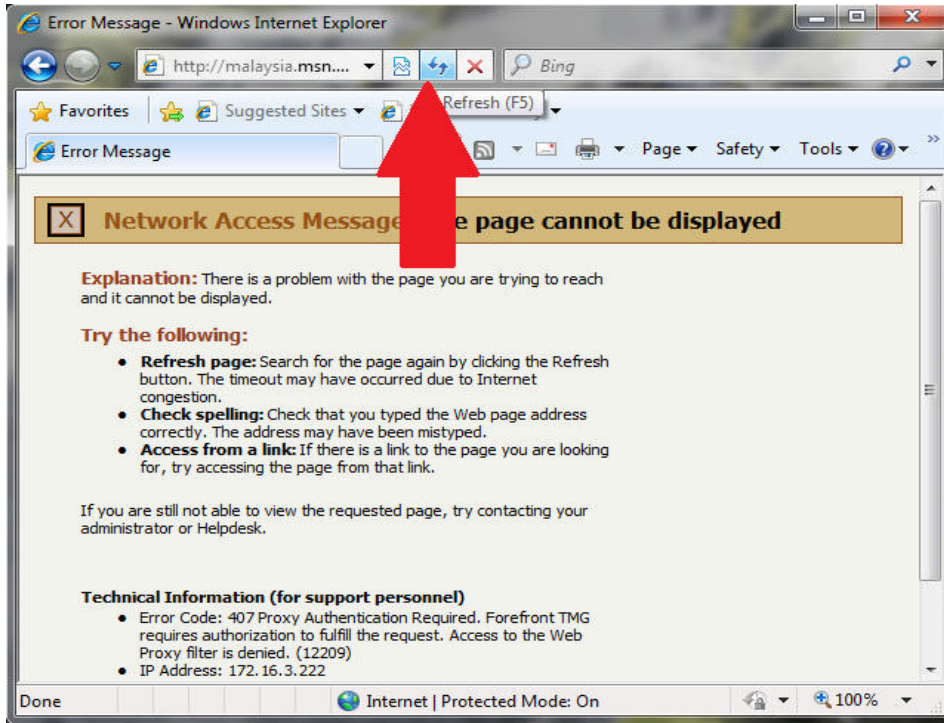


19. Tick 'Automatically detect settings', 'use proxy server.....' dan 'bypass...'

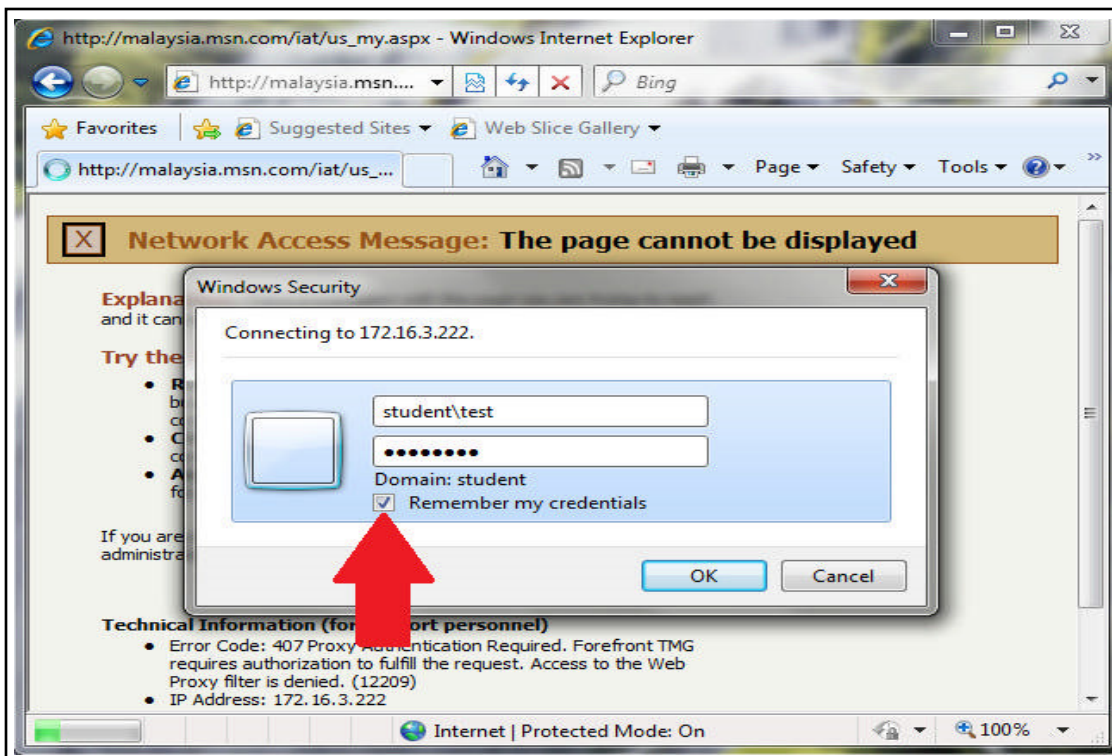


Click Ok 2 times

20. Click the Refresh button on your Internet Explorer or hit F5 on your keyboard



21. Enter your credentials as in No.13



Tick "Remember my credentials"

END